

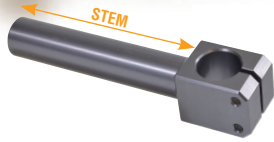


# Tri-Axis Transfer Presses

## Modular Tooling

### 1-1/4" Components Series

30 mm Components Series coming soon!

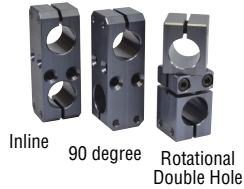


#### Arm Clamps - TAC

- Solid one piece construction
- Precision bore fit so finger assembly doesn't move when tightening bolts
- 2 - 8 mm S.H.C.S. for ultimate grip force
- 6061 T6-Aluminum

\*NOTE: Length is stem only. Does not include the head.

STEM LENGTH (in)	PART NO.
2	TAC1-125-125 x 2
4	TAC1-125-125 x 4
6	TAC1-125-125 x 6
8	TAC1-125-125 x 8
10	TAC1-125-125 x 10
12	TAC1-125-125 x 12
14	TAC1-125-125 x 14



#### Inline, 90 degree, and Rotational Double Hole Clamps - TDC

- Highest strength for parallel, perpendicular or rotational automation
- Holes for airline routing
- 2 - 8 mm S.H.C.S. per end for ultimate clamp force
- 6061 T6-Aluminum

MODEL	PART NO.
Inline	TDC1-000-125-125
Rotational	TDC1-360-125-125
90 degree	TDC1-090-125-125



#### Gripper/Clamp Mounts - TGM

- 5 mm, 6 mm and 8 mm bolt patterns
- Covers common gripper or shovel bolt patterns
- Undercut to accommodate S.H.C.S.
- Dome feature for swivel ball mounting
- 6061 T6-Aluminum

OVERALL LENGTH (in)	PART NO.*
4	TGMx-125 x 4
6	TGMx-125 x 6
8	TGMx-125 x 8
10	TGMx-125 x 10
12	TGMx-125 x 12
14	TGMx-125 x 14

\*See x Code chart below.

x CODE	FASTENERS	MOUNTS
2	6 mm	GRM2 Clamps, or TGUM/TGUS Adapter Plates
5	5 mm	Other Grippers/Clamps
7	8 mm	Tri-Axis Components: Ball Swivel Clamp, Swing Plate



#### Ball Swivel Assembly - TSB

- Allows gripper to rotate up to 80° and free spinning
- Rest of assembly can stay square to grid while creating any compound angle
- Bolts directly between gripper and gripper mount
- 6061 T6-Aluminum
- 5 different bolt patterns
- Covers most common gripper and shovel patterns

MODEL	PART NO.
Swivel Ball Mount	TSBMx-1-125*
Swivel Ball Clamp	TSBC1-125

\*See x Code chart below.

x CODE	FASTENERS	MOUNTS
2	6 mm	GRM2 Clamps, or TGUM/TGUS Adapter Plates
5	5 mm	Other Grippers/Clamps
7	8 mm	Tri-Axis Components: Ball Swivel Clamp, Swing Plate



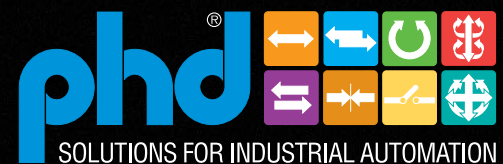
#### Collar Clamps - TCC

- 1-3/4" bore, 8 mm S.H.C.S.
- Used for securing receiver adapters to tooling
- Top is flat for finger and job identification
- Holes for air line routing
- Steel construction black oxide finish

MODEL	PART NO.
Collar Clamp	TCC1-175

© Copyright 2020, by PHD, Inc. All Rights Reserved. Printed in the U.S.A.

TACOMPONENTS01

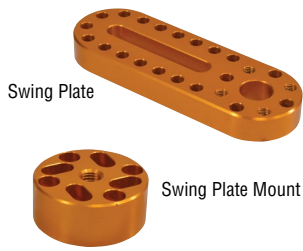


PHD is a member of the  
MAC Distributor Network

www.phdinc.com

# Tri-Axis Transfer Presses

## Modular Tooling 1-1/4" Components Series



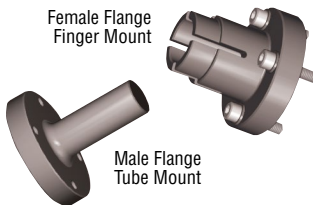
### Swing Plate Assembly - TSP

- Solves the problem of close to center adjustment
- Bolts directly to our gripper mount
- Multiple bolt patterns for many different styles of grippers or shovel assemblies
- 6061 T6-Aluminum

MODEL	PART NO.
Swing Plate	TSP1-125 x 65
Swing Plate Mount	TSPMx-1-125*

\*See x Code chart below.

x CODE	FASTENERS	MOUNTS
2	6 mm	GRM2 Clamps, or TGUM/TGUS Adapter Plates
5	5 mm	Other Grippers/Clamps



### Male and Female Flange Mounts - TFxM

- Replaces a receiver adapter when mounting finger directly to transfer bar, extruded beam, or removable plates
- 6061 T6-Aluminum

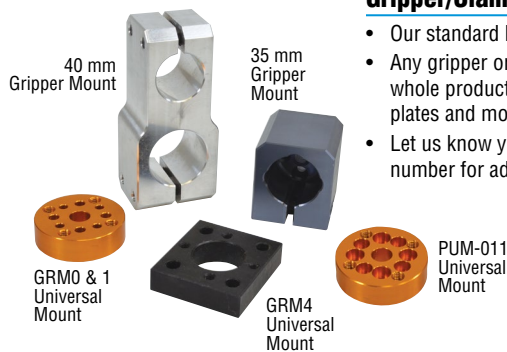
MODEL	PART NO.
Female Flange Finger Mount	TFFM1-1-125 x 3
Male Flange Tube Mount	TFTM1-1-125 x 3



### 1-1/4" Aluminum Tubing - TAT

- 1/4" wall for durability
- Available in 6" - 24" in 6" increments
- Custom lengths also available
- 6061 T6-Aluminum

TUBE LENGTH (in)	PART NO.
6	TAT1-125 x 6
12	TAT1-125 x 12
18	TAT1-125 x 18
24	TAT1-125 x 24



### Gripper/Clamp Adaptability

- Our standard bolt patterns fit most common grippers.
- Any gripper or shovel can take advantage of our whole product range with the use of our adapter plates and mounts.
- Let us know your gripper type and we will help with part number for adaptability

MODEL	PART NO.
40 mm Gripper Mount	TDC9-000-125-40
35 mm Gripper Mount	TDUM1-1-125
GRM4 Universal Mount	TGUS4-1-125
GRM0 & 1 Universal Mount	TGUM1-1-125
PUM-011 Universal Mount	TPUM1-1-125

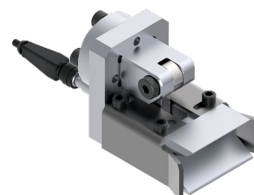
Components are either made from 6061 T6-Aluminum anodized for wear and visibility or steel and black oxide for corrosion resistance.

*30 mm Components Series coming soon!*



### Rotor and Slide Mounts

Provide your specifications and we can design and create required mounts. Contact PHD Customer Service for more information.



### Shovels

Provide us with your station parts and we will be glad to manufacture custom shovels to meet your specifications, with or without sensing capabilities.